

Jaspersoft BI | Flexible. Affordable. Proven BI Suite.



Jaspersoft is the world's most widely deployed Business Intelligence (BI) suite due to its comprehensive capabilities, flexible light weight architecture, and affordable subscription model. Jaspersoft delivers reporting, dashboards, analysis, and data integration services for both stand-alone and embedded BI requirements. With an intuitive web based user interface and powerful analytic tools, end users and businesses of all sizes can improve their competitiveness and decision making with Jaspersoft.



Reports



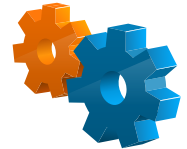
Dashboards



Data Analysis



Data Integration



BI Platform

MAKE FASTER, BETTER BUSINESS DECISIONS WITH JASPERSOFT

- Embedded or stand-alone reporting, dashboards, and analysis
- Integrated In-Memory Analysis explores data from relational or non-relational sources
- Powerful expressive OLAP engine with unified drag-and-drop ad hoc user interface
- Combine data from multiple sources for reporting and analysis
- Cloud ready BI platform with built-in multi-tenancy
- Analyze any data source including relational, Big Data, and OLAP sources
- Animated visualizations provides rich interactivity
- Seamlessly embeddable in commercial or custom operational applications
- Internationalized, localized, and multi-lingual for global deployments

TECHNOLOGY HIGHLIGHTS AND BENEFITS

Agnostic data source support

Report and analyze from relational, Big Data, and OLAP sources

HTTP URL addressable content

User-sharable reports, analyses, dashboards, and mash-ups

Web Services, Java, JSP APIs

Cost-effective customizations and seamless integrations

Data access metadata layer

End-user and Enterprise-Ready managed data access

CSS driven UI framework

Easy customization of fonts, colors, and UI layout

AWARDS



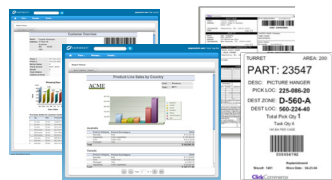
BI Platform

Jaspersoft provides a complete BI platform for reporting and analysis, with shared services including a metadata and content repository, report management, security integration, interactivity, and scheduling. The BI platform has been designed from the ground-up for integration with other applications through rich Web Services, Java, and HTTP APIs, as well as being completely ready for stand-alone enterprise BI deployments. It is also the first BI platform to offer multi-tenancy for SaaS applications out of the box. The Jaspersoft BI stack is comprised of the following products:

	JasperReports Library	Reporting Engine
	Jaspersoft iReport Designer	Visual Report Design Environment
	JasperReports Server	Ad Hoc Reports, Dashboards, In-Memory Analysis Server
	Jaspersoft OLAP	Powerful OLAP Data Analysis
	Jaspersoft ETL	High Performance Data Integration

Comprehensive Reporting

Jaspersoft is widely used to generate and distribute web and printable invoices, forms, and all varieties of complex reports from production systems. Reports can also be used to tap the rich data stored in your operational systems and business applications. Jaspersoft is uniquely qualified for embedding reports within a web application or de-coupled as a stand-alone BI application



Key features to support production reporting include:

- Pixel-perfect report layout
- Subreports for building complex reports
- Page-oriented or continuous output for screen or print
- Multiple data sources in one report
- JDBC, EJB, POJO, Hibernate, MDX, XML, CSV and custom data sources

Dashboards and Mash-ups

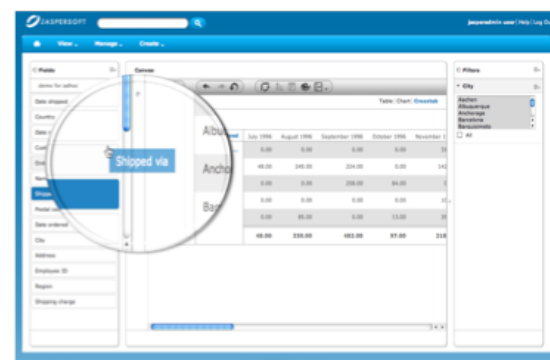
End users can design, configure, and deploy their own interactive BI dashboards in minutes.



It's as simple as dragging and dropping reports and charts onto the web-based dashboard designer. You can even "mash up" URL-addressable content, such as maps, videos, and content from other business applications for an even richer BI experience!

Self-Serve End-User Query and Reporting

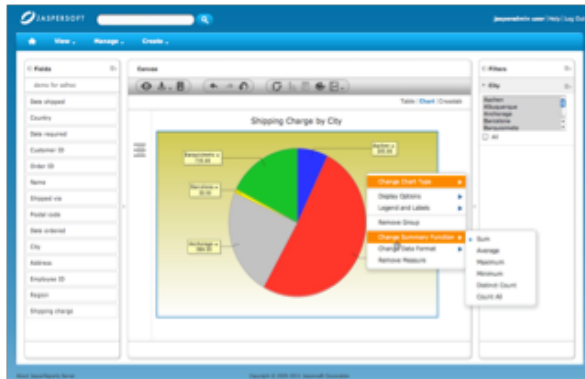
Powered by modern interactive Web technologies and rich metadata mapping of data sources, super users can build their own ad hoc query and reports—without depending on IT or developers. The intuitive drag and drop designer replaces the complexity of SQL and the underlying data structures.



Users can create, save, schedule, and distribute reports in a secure environment. With Jaspersoft, BI joins the modern application world of sharable content, whether your mashing reports with other web enabled content or embedding reports within an existing application. In a world where data and its context is critical, Jaspersoft gives end users the flexibility of interacting with data within a familiar application or as a stand alone environment within a traditional browser.

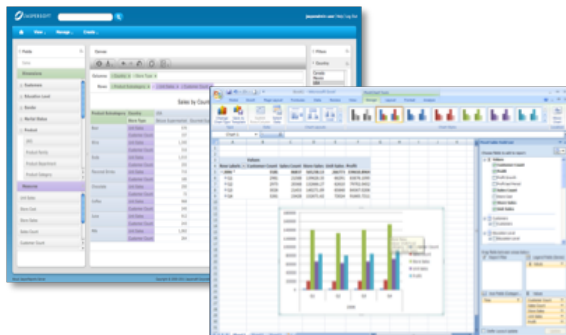
Integrated In-Memory Analysis

End users can directly analyze and explore their data in reports across multiple dimensions and measures from any data source. Leveraging an **In-Memory Analysis** engine, data exploration is powerful, fast, and easy to accomplish without requiring a data mart, warehouse, or OLAP server. Simply drag & drop, pivot, slice, and drill directly in the report. Visualize the data using charts and graphs, then save the results for reporting purposes.



OLAP Data Analysis

Jaspersoft's powerful **relational OLAP** (online analytical processing) server does the work that would be too difficult, too time-consuming, or too expensive to perform using standard SQL-based reporting.



The expressive and powerful OLAP technology is ideally suited to analyze large amounts of information stored in a data mart or data warehouse. Business analysts can interact with an intuitive interactive interface to slice and dice, pivot, filter, and analyze trends to make sense of large and diverse data sets. The intuitive drag-and-drop interface is enabled through the same ad hoc interface used for reports and dashboards. The UI is delivered via a browser or MS Excel interface giving users the flexibility to interact with data in the tool of their choice.

Data Integration (ETL)

With Jaspersoft, **organizations of all sizes** can develop, manage, and execute data integration processes for accurate and comprehensive production reporting, end-user query and reporting, data analysis, and operational reporting.



Jaspersoft's ETL solution is one of the industry's easiest-to-use and highest-performing solutions for data integration, transformation, movement, cleansing, and enrichment. Jaspersoft's ETL technology comes with dozens of connectors for a variety of data source environments. The tool provides dramatic improvements in productivity, manageability, and scalability compared to traditional manual coding of data loading and transformation.

Mobile Business Intelligence

Instant ubiquitous access to business information has become a growing necessity for competitive organizations. With the progress of tablet and smartphone devices, the reality of mobile BI has arrived.



Jaspersoft mobile gives business users the ability view, explore, and create information on-the-go using an iPad or iPhone device. JasperReports Server, accessible via a touch enabled iPad browser or through a native iOS application, powers the mobile platform. Organizations now have the choice to build a native BI application with an open source mobile SDK or rapidly deploy through a browser interface.

Product Editions & Licensing

Jaspersoft products are available as Professional and Enterprise editions with access to modifiable source code, and as open source Community projects.

Community Projects

The Jaspersoft Community projects provide BI functionality for open source developers and technology enthusiasts who want to add reporting and analytics to their applications and operational processes.

Community software is distributed by Jaspersoft “as-is” and can be modified and redistributed under the terms of GNU GPL open source license.

Professional & Enterprise Edition Products

The Professional & Enterprise Edition products build on the Community Projects and provide valuable benefits including:

- Professional technical support up to 24x7
- Advanced product features such as Web based Ad Hoc reporting, Integrated In-Memory Analysis, Flash powered visualizations, Multi-tenancy, and enhanced manageability with Audit Logging
- Commercial license that includes legal indemnification and product warranties
- Professionally managed release cycle
- Certified platform support for a wide range of popular application servers, operating systems, and databases

Check our editions page for more information.

OEM Licensing

The Professional & Enterprise Edition is also available under an OEM license giving customers the right to embed or redistribute Jaspersoft in commercially distributed or on-demand software-as-a-service (SaaS) application.

Obtaining Jaspersoft Software

Community Edition software is downloadable from jasperforge.org. Professional & Enterprise Edition software is available through annual and multi-year subscriptions. For a free evaluation copy, Live Hosted Trial, or for more information, email sales@jaspersoft.com or visit our website at jaspersoft.com/download.

Services and Support

Jaspersoft offers expert training, professional services, and among the industry's **highest-rated technical support** (based on independent BI industry analyst firm survey).

Technical Support

Jaspersoft's expert Technical Support offers guaranteed response times in a unlimited or per incident package. Customers are supported 24x7 by engineering experts .

Training

Jaspersoft offers self-paced web-based training classes, Live Online with instructor lead curriculum, and regular instructor-led classroom training classes. These classes are developed by the architects of Jaspersoft's products. Training can be delivered online or at your location using your own data.

Professional Services

Jaspersoft offers custom and pre-packaged Professional Services to help you with needs analysis, installation, customization, upgrades and migration, report development, integration, and implementation. Jaspersoft Professional Services can help your organization reduce ramp-up time, and accelerate project completion.

Contact Jaspersoft Today

For information about Jaspersoft partnerships, OEM licensing, products, support, or services offerings:

Jaspersoft Headquarters:

539 Bryant Street, Suite 100
San Francisco, CA 94107, USA
phone: +1 888.399.2199 or +1 415.348.2380
Email: sales@jaspersoft.com

Jaspersoft Europe, Middle-East, Africa:

Digital Court,
Rainsford Street, The Digital Hub
Dublin 8, Ireland
Phone: +353 1 443 4700
Email: sales-emea@jaspersoft.com

Jaspersoft Asia Pacific, Japan, Australia/NZ:

36th Floor, CRC Tower, All Seasons Place
87/2 Wireless Rd., Lumpini, Phatumwan
Bangkok 10330 Thailand
Phone: +66 2 625-3165
Email: sales-apac@jaspersoft.com