

Unlock the value of SAP data.

Organizations have spent enormous resources to centralize and automate their business processes using SAP. In fact, according to SAP, the SAP ecosystem powers more than 65% of the transactions that make up the world's Gross Domestic Product (GDP). Yet when it comes to being able to leverage the data within these systems organizations continue to face significant hurdles limiting the value of their investment. The solutions provided by SAP that are expected to extend the value of SAP data have proven to be costly, inflexible, and difficult to use. ABAP queries and BW reports provide some relief but are difficult to interact with, have had limited adoption, and don't easily integrate data from SAP and non-SAP data sources.

Jaspersoft's solution for SAP addresses the data integration and reporting requirements to allow for a flexible, proven and cost effective solution for SAP business users. Jaspersoft ETL can connect to any SAP module and can integrate both SAP and non-SAP data sources into a single data mart or data store. Jaspersoft's proven and affordable reporting solution delivers content in a variety of formats including pixel perfect reports, ad-hoc reports and interactive dashboards.

The SAP dedicated features in Jaspersoft ETL include:

- a. Connectors for reading and writing – These connectors enable development and deployment of bidirectional data transformations from and to SAP systems and between SAP and non-SAP systems.
- b. User driven wizards that allows for easy function calling and data handling through a visual interface
- c. Native SAP support at any level- Table, RFC and BAPI level

Jaspersoft ETL SAP connectivity

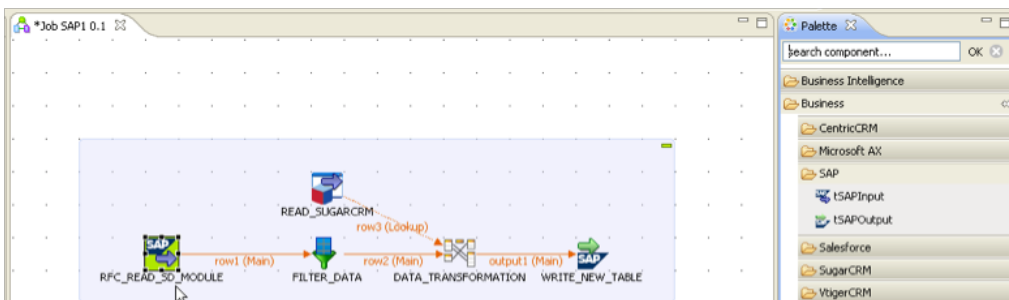
Jaspersoft ETL lets the user read and/or write data into and out of a SAP system using out of the box components. Using SAP dedicated components it is possible to build as many processes as needed to read, transform and upload data to/from any SAP system. SAP read and write connectors can be combined with more than 400 other components in the palette to implement complex data-related tasks.

Jaspersoft ETL's SAP components are based on the certified SAP Java connector, a middleware component provided by SAP that enables the development of SAP compatible components and applications in Java. This ensures that the user can access any level of SAP via Tables, RFCs, or BAPIs. This guarantees complete connectivity with any data-related module in a SAP environment.

The tSAPInput component reads a table or structure in order to extract all or part of the data contained in an SAP system. This component takes advantage of the SAP interfaces or functions that are surfaced in order to retrieve the desired data. The required parameters can be set for this component to connect to the SAP structure of choice, call the function needed and extract the desired data. The function called can be any RFC, BAPI or even a custom BAPI stored in the function library of the SAP system.

Connectivity Features

SAP dedicated components from the palette can be easily dragged and dropped to build jobs required to read, transform and upload data from any SAP system.



An example of a job could include extracting from a SAP SD (Sales & Distribution) module and filtering the extracted record. Reference information can then be looked up in a CRM module, mapped with the extracted data and then transformed to feed an SAP FI (Finance) module with the processed data.

Reading an SAP structure

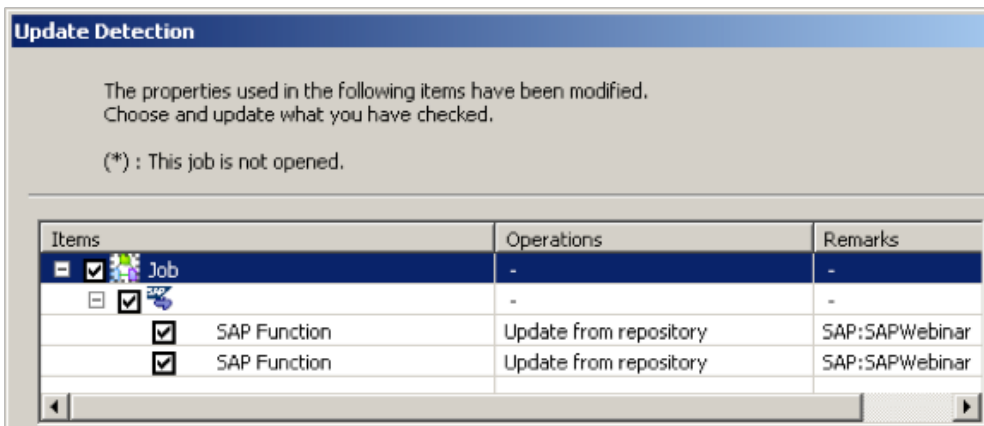
The tSAPInput component reads a table or structure in order to extract all or part of the data contained in an SAP system regardless of the level. This component takes advantage of the capabilities of SAP interfaces or functions to retrieve the desired data.

Parameter/Column	Type	TableName/StructureName	ParameterName
1	input_single		"DELIMITER"
"SFLIGHT"	input_single		"NO_DATA"
20	input_single		"QUERY_TABLE"
			"ROWCOUNT"
SWA	table_output	"DATA"	"SWA"
FIELDNAME	table_output	"FIELDS"	"FIELDNAME"
OFFSET	table_output	"FIELDS"	"OFFSET"
LENGTH	table_output	"FIELDS"	"LENGTH"
TYPE	table_output	"FIELDS"	"TYPE"
FIELDTEXT	table_output	"FIELDS"	"FIELDTEXT"

Reusability and Productivity

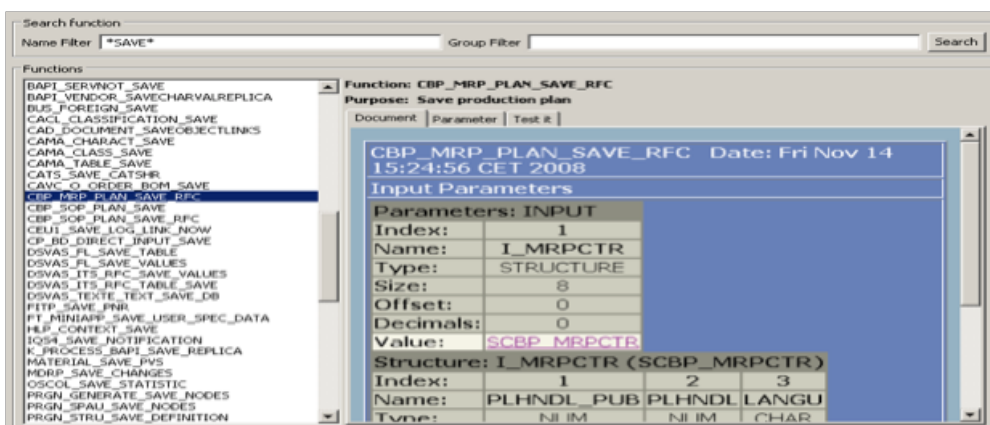
The SAP wizard makes configuration of SAP read and write components much easier for developers, allowing them to focus on the data integration task and not spend development cycles on manually assembling all necessary components. This feature allows developers to centrally store both their connection settings and their function call configuration settings for reuse.

One of the most powerful capabilities in Jaspersoft ETL is the collaborative work capability, by which the SAP settings stored in the SAP wizard are made available to all registered users through the repository. Jaspersoft ETL also offers impact analysis capabilities that can identify dependencies in other jobs. In an SAP environment this can be quite useful, especially for processes that have already gone live and have had configuration changes.



As shown above the developer can decide whether it is worth propagating the changes to all processes based on the shared configuration. Other capabilities provided by the SAP wizard include:

- Direct access to the detailed metadata from the SAP dictionary
- Real-time testing of the SAP function
- Direct access to the BAPI documentation as shown



Jaspersoft Business Intelligence capabilities

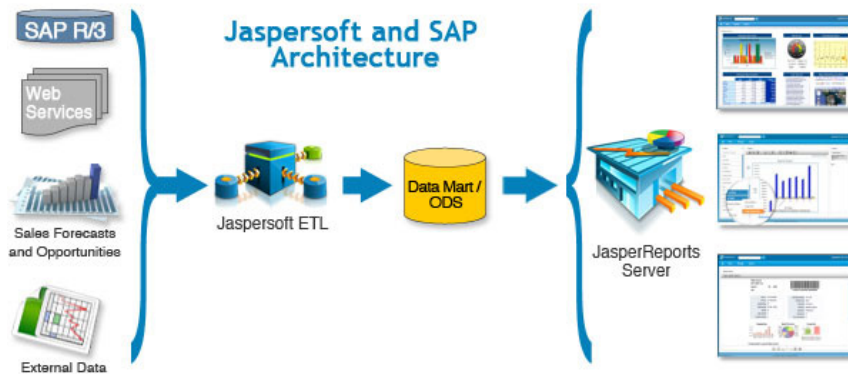
The flexibility of the Jaspersoft BI Suite enables business users to consume SAP related information in a variety of outputs including pixel perfect reports, interactive dashboards and in-memory based ad-hoc analysis.

Key benefits include:

1. Intuitive and modern web- based Ad-Hoc query and reporting environment enabling self service BI
2. Dashboards with animated visualizations provide rich interactivity to go from summary statistics on sales and margin to detailed product and customer level information
3. Ability to schedule and deliver reports to large number of business users in a variety of formats and at pre-defined time intervals leveraging a calendar.

Architecture

The diagram below provides an end-to-end representative architecture for extracting data from SAP and non-SAP systems and displaying that information to business users in a variety of outputs using the Jaspersoft BI suite.



Conclusion

By offering the first end-to-end solution to extract, transform and report on SAP data based on open source technologies Jaspersoft is enabling the BI Builder to implement and deploy a cost effective solution to bring insights from SAP data to thousands of end users at a much faster pace than ever seen.

CONTACT US

Jaspersoft Headquarters:

539 Bryant Street, Suite 100
San Francisco, CA 94107, USA
phone: +1 888.399.2199 or +1 415.348.2380
Email: sales@jaspersoft.com

Jaspersoft Europe, Middle-East, Africa:

4 St. Catherine's Lane
Dublin 8, Ireland
Phone: +353 1 443 4700
Email: sales-emea@jaspersoft.com

Jaspersoft Asia Pacific, Japan, Australia/NZ:

36th Floor, CRC Tower, All Seasons Place
87/2 Wireless Rd., Lumpini, Phatumwan
Bangkok 10330 Thailand
Phone: +66 2 625-3165
Email: sales-apac@jaspersoft.com